

## Skjemainformasjon

Skjema	SFU
Referanse	1006662
Innsendt	12.05.2013 19:26:08

## Host

Information about host institution and center

Name of centre	Centre for Professional Studies in Health and Social Work Education
Host institution	University of Agder
PO Box address	P.O.Box 442
Postal code / City/place	4604 KRISTIANSAND S
Telephone	38141000
E-mail address	post@uia.no

## Contact person

Contact person

Name	Åshild Slettebø
Title	Professor
Telephone work / mobile	37233784 99243315
E-mail address	ashild.slettebo@uia.no

## About the centre

### About the centre

Is the centre already established at the time of application

No

### Describe briefly the plans for establishing the centre (maximum 1500 characters)

This application proposes the establishment of a "Center of Excellence in Higher Education" in the field of health and social work education; the proposed center will be called the Center for Professional Studies in Health and Social Work Education (ProHeSo). ProHeSo will be developed jointly by a university network for professions within school, health and welfare education established in November 15, 2011. The University Network consists of the University of Agder (UiA), University of Nordland (UiN) and University of Stavanger (UiS). The main motivation for developing ProHeSo between the three universities and not merely proceed with the work at each institution separately, is the synergy and added value that drawing upon the different and complementing strengths and competences in health and welfare educations gives us. A stronger interaction between education, research and work practice will be developed in the center. UiA is the host and formal project owner of ProHeSo. ProHeSo will be led by Professor Åshild Slettebø, a leading researcher in the field of health sciences who focuses on professional ethics and professional studies in health education, together with three work package leaders. ProHeSo will contribute to the development of excellent quality in established educational provision, with a focus on innovation and international collaboration and the dissemination of knowledge about good educational practices.

### Describe briefly the aims and current as well as planned activities of the centre (maximum 1500 characters)

Our vision for Centre for Professional Studies in Health and Social Work Education (ProHeSo) is to educate knowledgeable health and social workers skilled in research and development (R&D) work and anchored with practical knowledge. We will prepare students for a professional role that includes taking responsibility for continuous knowledge creation and innovation in service development, and linking research and practice. ProHeSo will bring together researchers from the three universities to develop teaching and R&D activities in the health and welfare sector to change and improve professional studies and education in health and social work education. All three universities will be responsible for selected research and development areas. The Work Packages (WPs) are: WP1. Developing e-learning resources, WP 2. Teaching and learning in simulated environments, WP 3. Practical knowledge and formation of education of professions, and WP 4. Management, leadership and dissemination of R&D into education. By establishing meeting points, ProHeSo will contribute to increase collaborations and dissemination across the WPs and between the WPs and between national and international partners. Dissemination methods depend on the task at hand, as well as on the agenda of the various target audiences. For example, newsletters, flyers and press releases, reports, journal papers, digital workshops and conferences will be used for knowledge dissemination.

## Application Document

### Application Document

Upload application document

[profile\\_SFU application ProHeSo.docx](#)

## Timeline and budget

### Timeline and budget

Upload planned timeline and the activities to be conducted

[timeline\\_Timeline ProHeSo 2014-2018.xlsx](#)

Upload plan for financial resource acquisition

[financial\\_ProHeSo.pptx](#)

Upload budget

[budget\\_Budget ProHeSo 2014-2018.xlsx](#)

## Attachments

### Attachments

- CV\_Professor\_Gunn\_S\_Hutchinson\_\_.pdf
- CV\_Professor\_Elisabeth\_Willumsen.pdf
- CV\_Director\_Professor\_AAshild\_Sletteboe.pdf
- budget\_Budget ProHeSo 2014-2018.xlsx
- financial\_ProHeSo.pptx
- timeline\_Timeline ProHeSo 2014-2018.xlsx
- profile\_SFU application ProHeSo.docx
- Att\_WPs\_ProHeSo.docx

### Comments

#### Comments to the application form (maximum 1500 characters)

One document was not uploaded during the first submission. Please delete application nr. 1006627.

**Centre for Professional Studies in Health and Social Work Education (ProHeSo)**  
**Consortium: The University of Agder (UiA) (host), University of Nordland (UiN) and**  
**University of Stavanger (UiS)**

## **1. VISION AND GOAL**

**Our vision for Centre for Professional Studies in Health and Social Work Education (ProHeSo) is to educate knowledgeable health and social workers skilled in research and development work and anchored with practical knowledge. We will prepare students for a professional role that includes taking responsibility for continuous knowledge creation and innovation in service development, and linking research and practice.**

The proposed ProHeSo emerges from the University Network for professions within school, health and welfare education established between the University of Agder (UiA), the University of Nordland (UiN) and the University of Stavanger (UiS) in November 15, 2011. ProHeSo will directly address the national priority set out in White Paper No. 13 (2011-2012) *Education for welfare: interaction as key*<sup>1</sup> that requires a change in the health and social work education at all levels, with stronger interaction between education, research and work practice. ProHeSo's vision will be realized through four main tasks: 1) Developing e-learning resources, 2) Teaching and learning in simulated environments, 3) Development of practical knowledge, and 4) Management, leadership and disseminating research, innovation and international collaboration. The need for change pointed out in White Paper No. 13 is reflected in contemporary challenges and the reforms launched to meet these challenges in health and welfare services, (e.g., Report No. 47 (2008-2009) *The Coordination Reform: Proper treatment at the right place and right time*<sup>2</sup>). ProHeSo will contribute to a stronger collaboration between higher education institutions and working life and, in turn, facilitate a broader understanding of complex problems and issues while developing innovative solutions for challenges in health and welfare services.

**ProHeSo's main goal is therefore to develop a centre that strengthens the education of health and social workers by promoting high level education, including research and development (R&D) activities, innovation and international collaboration.**

---

<sup>1</sup> <http://www.regjeringen.no/en/dep/kd/documents/brochures-and-handbooks/2012/white-paper-no-13-2011-2012-education-fo.html?id=672771>

<sup>2</sup> <http://www.regjeringen.no/en/dep/hod/kampanjer/the-coordination-reform/annet/the-coordination-reform.html?id=669079>

## 2. THE STRENGTH OF THE CONSORTIUM PARTNERS

The main motivation for developing ProHeSo between the three universities and not merely proceed with the work at each institution separately, is the synergy and added value that drawing upon the different and complementing strengths and competences in health and welfare educations gives us. Facing new and complex challenges as described in White Paper No. 13. ProHeSo will build on evaluations of the UiA, UiN and UiS carried out by the Norwegian Agency for Quality Assurance in Education (NOKUT). NOKUT evaluated the quality assurance systems at the UiA, UiN and UiS and found these systems to be satisfactory (NOKUT, 2009, 2011, 2012). The Ministry of Education and Research report for 2012 shows that the UiA and UiS overall have high rates of completion<sup>3</sup>. Interdisciplinary collaboration within and across faculties and institutions will be a key to the success of ProHeSo. The UiA, UiN and UiS's academic portfolio is characterised by multidisciplinary and career-oriented educational programmes. The proposed ProHeSo will bring these faculties and institutions together to initiate and sustain networks that will enable sharing and support the education of creative and resourceful health and social workers who are skilled in interdisciplinary teamwork and problem solving. All three universities (i.e. UiA, UiN and UiS) have longstanding educational traditions and courses central to ProHeSo, with programmes ranging from undergraduate to PhD level. The three universities together have 11 bachelor programmes, 16 master programmes and several continuing education courses in health and social work education. The Research School for Profession-Oriented and Practice-Relevant Research in the fields of Health, Welfare and Education (PROFRES) is under establishment by the University Network, financed over the three universities' own budgets. The starting date of PROFRES will be January 1, 2014. Combined with the extensive research being conducted within practice-related fields, these institutions have a unique portfolio in terms of breadth, depth and scope in a Norwegian university context. The six departments collaborating on this application comprise approximately 25 professors, 55 associate professors and several teaching specialists working in the study programmes.

Six established research groups within the three universities are directly relevant to the call for proposals. At UiN, the theory of practical knowledge research group led by Professor James McGuirk currently includes 11 senior researchers and 25 PhD candidates. Pronett<sup>4</sup>, at UiA, led by Associate Professor Anne Halvorsen, includes 55 senior researchers and 6 PhD candidates. The Centre for Caring Research - Southern Norway<sup>5</sup>, led by Professor Olle Söderhamn currently includes a group of 12 senior researchers and 5 PhD candidates. Praxis-sør<sup>6</sup> is a centre for practice

---

<sup>3</sup> [http://www.regjeringen.no/upload/KD/Vedlegg/UH/Rapporter\\_og\\_planer/Tilstandsrapport\\_2012\\_270612.pdf](http://www.regjeringen.no/upload/KD/Vedlegg/UH/Rapporter_og_planer/Tilstandsrapport_2012_270612.pdf)

<sup>4</sup> <http://www.uia.no/no/portaler/forskning/pronett/pronett>

<sup>5</sup> <http://www.omsorgsor.no/>

<sup>6</sup> <http://www.uia.no/no/div/sentre/praxis-soer>

research and knowledge development and collaboration between research and practice. Praxis-sør, which started in 2002, is a centre for practice research and knowledge development; it is also a centre for collaboration between research and practice. Praxis-sør has organised more than 30 member organisations and is run by the Department of Sociology and Social Work (UiA). The UiS established the research programme area "Quality and Safety in Health Care Systems"<sup>7</sup> in 2011 (as part of on-going research since 2005), with researchers from the UiS in close cooperation with Stavanger University Hospital (SUS) and Stavanger Acute Medicine Foundation for Education and Research (SAFER), a centre with the goal to strengthen acute medical teaching and patient safety through research and education. The research programme area is led by Professor Karina Aase and consists of 18 full- and part-time researchers, including four post-doctoral researchers and seven PhD candidates. The UiS "Quality and Safety in Healthcare Systems" research group is part of EU research through the FP7 Framework Programme under the project "Quality and Safety in European Union Hospitals". The UiS also includes the Network for Gender Studies, led by Professor Wencke Mühleisen. In 2012, the UiS became the Norwegian member of the European Consortium of Innovative Universities (ECIU). The ECIU's vision is to be one of the global leaders in higher education through its collective expertise and commitment to innovation in teaching and learning and members shared history of fostering economic and social development in regions in transition<sup>8</sup>.

◀ The UiA, as the host of ProHeSo, together with the Grimstad municipality and a private investor, J.B. Ugland Eiendom A/S, the owner of the UiA campus in Grimstad, have started to plan and develop a combined independent living, assisted living and nursing home complex on the campus to meet future challenges and increase the opportunities of innovation and research in health and welfare services. This facility will be an arena for continuous interaction between clinicians, students, and researchers. The UiA and UiS have also recently received funding from the Research Council of Norway through the PRAKSISVEL programme. The "Innovation and Service Development through Evolving Forms of Collaboration" project is led by Professor Anne Marie Støkken at the UiA.

### **3. MANAGEMENT AND ORGANISATION**

The University Network has jointly developed the idea of ProHeSo. This network ideally would have been organised as a formal co-ownership between the partners to ensure equal dedication and involvement at all levels. Because such a co-ownership is not formally an option, openness, equality and substantial contributions by all of the involved institutions will be ensured by integrated co-development of projects in combination with a transparent project management. The UiA has been

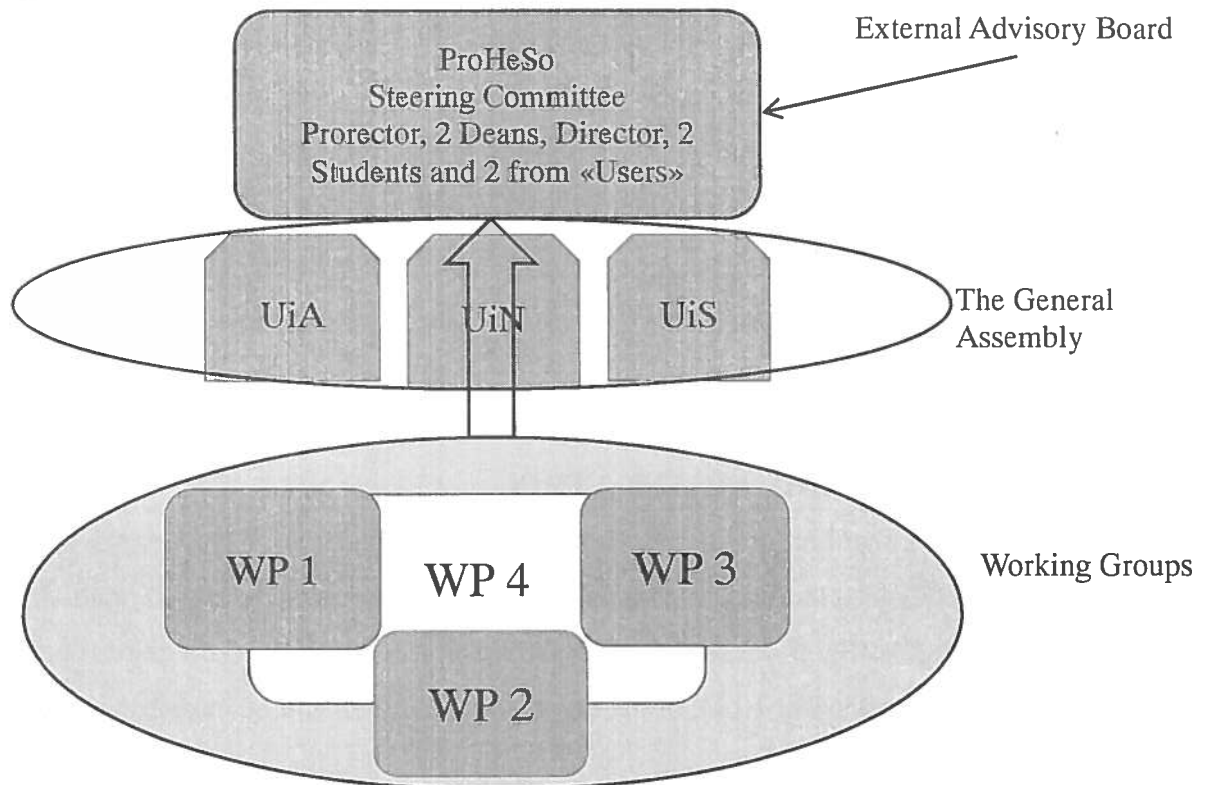
---

<sup>7</sup> <http://seros.uis.no/category.php?categoryID=6289>

<sup>8</sup> <http://eciu.web.ua.pt/page.asp?pg=74>

appointed host of ProHeSo, and the centre will physically be established at the UiA. The daily affairs will be run by the Director of ProHeSo, Professor Åshild Slettebø. All three universities will be responsible for selected R&D areas. Each package of practises has been named a Work Package (WP) and is numbered 1-4. The WPs describe the subset of projects included. The leaders for the WPs will be: WP-1, Associate Professor Bjørn Øystein Angel (UiA); WP-2, Professor Elisabeth Willumsen (UiS); WP-3, Professor Gunn Strand Hutchinson (UiN); and WP-4, Professor Åshild Slettebø (UiA). The ProHeSo steering committee (SC) will consist of members of the University Network, represented by the Director of ProHeSo, Professor Åshild Slettebø, Prorector (leader) and the two deans of the relevant faculties of the University Network. Two students and two representatives of users, one from the Norwegian Association of Local and Regional Authorities (KS) and one from the third sector, will also be on the SC. The above-mentioned PROFRES is led by Professor Febe Friberg at UiS. PROFRES and ProHeSo will be collaborative partners because, practice and collaborative research are core elements also for PROFRES. PronettUiA is an internal UiA network of researchers engaged in research oriented toward work practice and professions. Parallel local networks are planned and under development at UiN and UiS. The University Network, PronettUiA, PronettUiS and PronettUiN will play important roles as arenas in ProHeSo for discussion, dissemination and inspiration for further R&D. ProHeSo will seek to collaborate with other Norwegian Centres of Excellence. The planned organisation is shown in Figure 1.

**Figure 1. Organisation of ProHeSo**



#### **4. EXTERNAL ADVISORY BOARD AND COLLABORATIVE NETWORKS**

ProHeSo will have a 7-person external advisory board consisting of five international researchers and two representatives from the national public sector. Both innovation and internalisation in professional studies of health and social education will be central to all four WPs. UiA, UiN and UiS are partners in several networks important to the dissemination of knowledge about good educational practice. Nordplus organises researchers from all of the Nordic countries<sup>9</sup>. UiA also participates in a network that organises social work researchers from Norway, Sweden, Denmark, Switzerland, the UK, the USA and Germany. The network is closely connected to the European Conference for Social Work Research (ECSWR). In addition, a Nordic research network in health care leadership is led by Professor Terese Bondas at UiN<sup>10</sup>. The Nordic research network is a platform for course and project development at several levels. The motivation for including this network is to meet the Norwegian government's encouragement of innovation in the public sector by focusing on inventive individuals developing new and better solutions. Meeting this goal requires cultivating a culture of entrepreneurship and creative enterprises for developing collaboration to improve services, including partnership with higher education institutions to meet challenges and maintain sustainable development. The public sector PhD programme is anticipated to be launched by Research Council of Norway in 2014 as an important mechanism for catalysing collaborative PhD level research initiatives between the public health sector and the three partner institutions. For example, Kristiansand municipality has already set aside 1.4 million NOK to support PhD projects directly tied to community health care innovation in cooperation with UiA as part of such a partnership.

#### **5. RESEARCH AND DEVELOPMENT ACTIVITIES**

ProHeSo will encourage critical reflection of the notions of practical knowledge and knowledge in practice as components of R&D. The R&D includes the exploration and articulation of practical knowledge, the sense or logic of practice, the relationship between lay and professional knowledge and the relationship between common sense (or first order) knowledge and more abstract forms of knowledge. The R&D also involves sensitivity to the methods in which different types of knowledge are operative in practice, and relates to questions of power, user participation, integrity, discretion, gender, ethics, and the challenges that these components pose for research and professional practice. The R&D activities will be conducted in WP 1-4, with WP 4 as an integrative WP that will be named management, leadership and dissemination of R&D into education and focus on the research questions closely related to challenges experienced in work practice. It is

---

<sup>9</sup> <http://www.nordplusonline.org/>

<sup>10</sup> <http://www.uin.no/omuinn/fakulteter/phs/forskning/forskningsnettverk/niv/Pages/default.aspx>



commonly acknowledged that there is a need for more research within and on work practice and that this research should be practice-oriented. To achieve the overall goal of developing a centre that contributes to education of knowledgeable and skilled health and social workers through promoting higher-level education, including R&D, innovation and international collaboration, ProHeSo will bring together researchers from the three universities to develop teaching and R&D activities in the health and welfare sector to change and improve professional studies and education in health and social work education.

## 6. WORK PLAN, TIME SCHEDULE AND DELIVERABLES

The four WPs of ProHeSo will focus on high-quality practices among the consortium partners and will be followed up with R&D during the first five years of the centre. The tasks (Ts) listed in the table below show the areas that will be the focus of R&D in improving professional studies in health and social work education at ProHeSo. References, links and a timeline are attached.

<b>WP 1. Developing e-learning resources.</b>	<b>T 1-1</b> Contextual social work. <b>T 1-2</b> Online bachelor’s degree in nursing sciences. <b>T 1-3</b> Gamification in teaching.
<b>WP 2. Teaching and learning in simulated environments.</b>	<b>T 2-1</b> High- and low-fidelity simulation in health and social worker education practices. <b>T 2-2</b> Innovation in education in the public sector. <b>T 2-3</b> Patient safety.
<b>WP 3. Practical knowledge and formation of education of professions.</b>	<b>T 3-1</b> Study foundation semesters. <b>T 3-2</b> Development of models for knowledge-building network and user participation. <b>T 3-3</b> Ethics and practical knowledge. <b>T 3-4</b> Participation of non-governmental organisations in education.
<b>WP 4. Management, leadership and dissemination of R&amp;D into education.</b>	<b>T 4-1</b> Management. <b>T 4-2</b> Leadership. <b>T 4-3</b> Dissemination.

### **WP 1: Title: Developing e-learning resources.**

**Objective:** To design, develop, implement and evaluate innovative e-learning resources for teaching and learning, and share this with teachers and users in health and social work education.

WP 1 will focus on developing courses and technology to make studying at home possible. Students are offered various newly developed e-learning tools, including rich media e-compendiums, podcasts, digital multiple-choice tests and digital discussion forums, all in close co-operation with

NettOp at UiS. ProHeSo will thus increasingly use digital media and develop effective methods for use in studies, research and communication in addition to international collaboration.

**T 1-1: Contextual social work.** UiA, UiN and UiS are competent in the use of technology in higher education; relevant examples include the online Bachelor degree in nursing sciences at UiN and UiS, the MA course in contextual social work, which was developed in collaboration with the Thematic Network on Social Work, University of Arctic (lead part, UiN) and the Virtual Campus in Social Work (lead part, University of Inholland). The MA course in contextual social work is offered at UiN and the University of Umeå (Sweden). In T 1-1, the quality of the online courses will be improved by using numerous new teaching and learning methods.

**T 1-2: Online bachelor's degree in nursing sciences.** Another on-going project is Science in Nursing-1 (10 ECTS, Baccalaureate in Nursing Education, UiS), which primarily addresses anatomy and physiology in which optional lectures are available to on-campus students and task-solving seminars are offered through various newly developed e-learning tools, including rich media e-compendiums, podcasts, digital multiple-choice tests and digital discussion forums. An evaluation of current efforts to improve teaching, learning and assessment will be conducted.

**T 1-3: Gamification in teaching.** Gamification is the use of video game elements in non-gaming systems to improve user experience and that can yield positive results when used for health care educational purposes. ProHeSo seeks to gain knowledge about how gamification can be used to increase motivation and further develop e-learning tools for students in health and social work education.

**WP 2: Title: Teaching and learning in simulated environments.**

**Objectives:** To equip health and social workers with high levels of clinical reasoning and basic skills through technology-supported learning. WP 2 will be further developed as a joint effort by integration of research in education and information dissemination to support inter-professional learning and transformation.

**T 2-1: High- and low-fidelity simulation in health and social worker education practices.**

Simulation has been used at some level in educational settings for a number of years. There are currently several simulation methods available though the most common type in nursing education is the human patient simulator (HPS). The SAFER is an on-going partnership between UiS, SUS and SAFER. One of the projects, *SimPad*, which involves a newly developed simulation-based tool, is currently implemented in basic skills training courses at UiS and SAFER. The nursing programme at UiA includes high-fidelity simulation sessions in Grimstad. T 2-1 focuses on basic skills training and patient safety through education (simulation), evaluation, development and research using a multidisciplinary approach.

**T 2-2: Innovation in education in the public sector.** The Centre for Innovation in the Public Sector (SIOS) at UiN and the Centre for Innovation Research at UiS are interdisciplinary centres that employ insight from several disciplines to better understand innovation in the public sector and conduct collaborative studies with industry and governments to inform policy and strategy regionally, nationally and internationally. The focus in T2 will be on cooperation with local authorities, to initiate and conduct conferences, research, knowledge dissemination and training activities in welfare education, as well as to initiate research applications.

**T 2-3: Patient safety.** UiS conducts a 10 ECTS Master's course in patient safety that is available for Master's students in the Health Sciences, Change Management and Societal Safety programmes and as an experience-based Master's course for practicing health care personnel. UiS is also integrating patient safety as a subject throughout the three-year Bachelor's degree in nursing. This task focuses on running the Patient Safety Master's course as a joint UiA, UiN and UiS effort and on integrating patient safety as an integrated part of health care and social care education across the institutions.

**WP 3: Title: Practical knowledge and formation of education of professions.**

**Objectives:** To develop and contribute a better understanding of the nature and challenges of professional practice in health and social work education in a contemporary setting.

WP 3 will contribute, in collaboration with The Center for Practical Knowledge (CPK) at UiN, local communities, organisations and the third sector, to a collective development of competence and knowledge in health and social work education.

**T 3-1: Study foundation semesters.** UiN is developing a "Study foundation semester for individual, society and science" to begin in autumn 2013 for all students at the Faculty of Social Sciences. The objective is to make students better able to study and engage themselves. Task T3-1 will focus on the development and evaluation of this course.

**T 3-2: Development of models for knowledge-building network and user participation.**

Researchers at UiA, together with practitioners and users, have conducted collaborative research and development through knowledge-building networks since 2006. The concept will be further developed with a continued focus on developing models for practice-oriented R&D and with an additional goal of contributing to practice-focused cultures in research communities and research-focused cultures in welfare organizations.

This project will also build on previously established collaborations with the user organisation A-Larm and user-driven centre ROM-Agder, in which models of user participation in supervision have been tested. The goal is to further develop the communicative skills health and social workers by involving users in supervision and teaching, particularly in connection with

practice placement. The project will be prolonged with a strengthened focus on data collection and the systematic analysis of strengths/possibilities and weaknesses/challenges.

**T 3-3: Ethics and practical knowledge.** Each of the three universities is heavily involved in research on ethics, which includes projects on ethics in community health care, user participation and professional practice at UiA, on virtue ethics at UiS and on everyday ethics as part of research on practical knowledge and as a practice collaboration project with the community and surrounding region at UiN. Ethics will be further developed as a common research field between the three universities and as basis for curriculum development.

**T 3-4: Participation of non-governmental organisations in education.** Patient and user involvement in healthcare and education (non-governmental organisations (NGOs) participation) are perspectives that are integrated in on-going courses at both the Bachelor's and Master's level at UiS to increase student awareness of political, educational and practical implications. Task T 3-4 focuses on 1) a more formalized involvement of service-user organisations and research; 2) the development and adaption of current courses at the Master's level and for English-speaking students; and 3) the development and use of interactive web-based teaching methods that engage and empower students and have the potential to be further developed across institutions (UiS, UiA and UiN). Additionally, the on-going EU-project PERARES (Public Engagement with Research and Research Engagement with Society), which includes 25 universities in Europe, is run at UiS and involves NGOs and civil society organisations (CSOs) at the Master's level and has developed "Forskningstorget" (research marketplace) as a meeting place for students, researchers, NGO/CSO representatives and other local partners for mutual dialogues on themes and issues relevant to projects at the Master's level.

**WP 4. Title: Management, leadership and dissemination of R&D into education.**

**Objectives:** To focus on the management, leadership and dissemination of ProHeSo to further develop, refine and improve practice in order to enhance students' professional learning in healthcare and social work education.

**T 4-1: Management.** UiA will conduct the management of this WP. There will be a centre leader to coordinate the three participating universities and different WPs. The centre leader will be responsible for overseeing the research in the Centre for Outstanding Education.

**T 4-2: Leadership.** Strong and visionary academic leadership, governance structures that encapsulate research, the building of a research culture and credibility in education are required for effective interprofessional collaboration and transformation. As part of each WP, leadership across institutions will therefore be of importance because of the integration of research at the Bachelor's and Master's level. New methods for facilitating collaborative networks, supervising research,

strengthening professional identity and establishing health and social leadership values are highlighted for continuous improvement in education and practice.

**T 4-3: Dissemination.** The results of each WP will be disseminated to all three universities, the local communities and the regional welfare institutions. The focus of this task will be on enhancing Bachelor's programmes specifically, as well as Master's programmes, in healthcare and social work education. In addition, papers will be published to disseminate results throughout the educational system in Norway. Examples of possible journals in social science and education include the International Journal of Humanities and Social Science. Examples of journals in healthcare science and education include the International Journal of Nursing Studies and Nursing Ethics.

The four WPs will directly address the challenges in higher education of health and social workers set out in White Paper No. 13 (2011-2012), Report nr.47 (2008-2009) and White Paper No.29 (2012-2013)<sup>11</sup>. Accordingly, ProHeSo will assume a position as a leading centre for research-based professional study programmes, academic development of and research on health care and social workers higher education, anchored in the University Network for professions within school, health and welfare education and leaning against The Research School–PROFRES.

## 7. DISSEMINATION PLAN

The expected deliverables for 2014-2018 are as follows: 50-60 journal papers, 40-50 conference papers and the supervision of several PhD and MSc theses. In addition, through ProHeSo, we expect to continue to develop a highly skilled research consortium within professional studies in health and social work education. Previously established centres, research network and programmes, such as Praxis-sør (UiA), the Centre for Caring Research - Southern Norway (UiA), SIOS (UiN), the Centre for Innovation Research (UiS), the Quality and Safety in Healthcare Systems (UiS), the Nordic Research Network in Healthcare Leadership (UiN) and the Network for Gender Studies (UiS) will be used to foster dissemination to users and the health and welfare sector.

A website will be established for continuous informational and communicational purposes. ProHeSo will propose a digital meeting place for students, teachers, administrators and practitioners/practices involved in the WPs. A website will allow discussion in real-time meetings and virtual meetings. By establishing meeting points, ProHeSo will contribute to increase collaborations and dissemination across the WPs and between the WPs and between national and international partners. Dissemination methods depend on the task at hand, as well as on the agenda of the various target audiences. For example, newsletters, flyers and press releases, reports, journal papers, digital workshops and conferences will be used for knowledge dissemination. The timeline attached shows the conferences and digital workshops.

---

<sup>11</sup> <http://www.regjeringen.no/en/dep/hod/documents/regpubl/stmeld/2012-2013/meld-st-29-20122013.html?id=723252>

## WORK PACKAGES 1-4 WITH REFERENCES AND LINKS

### WP 1. Developing e-learning resources.

#### T 1-1: Contextual social work.

##### Links:

[www.vircamp.net](http://www.vircamp.net)

[www.uarctic.org/SingleArticle.aspx?m=281&amid=1143](http://www.uarctic.org/SingleArticle.aspx?m=281&amid=1143)

##### Selected partners:

University of Umeå, Sweden (Dr. Petra Ahnlund, epost: [petra.ahnlund@socw.umu.se](mailto:petra.ahnlund@socw.umu.se)), University of Regina, Canada (Professor Doug Durst epost: [doug.durst@uregina.ca](mailto:doug.durst@uregina.ca)), Northern Federal Arctic University, NArFU, Arkhangelsk, Russia (Dr. Lidia Kriulya, epost: [lidias@mail.ru](mailto:lidias@mail.ru))

#### T 1-2: Online bachelor's degree in nursing sciences.

##### Publications:

Foss B, Oftedal BF, Løkken A (2013). Rich media e-compendiums: A new tool for enhanced learning in higher education. *European Journal of Open, Distance and E-Learning* 16(1): 102-114.

Foss B, Mordt P, Oftedal BF, Løkken A. Medication calculation: The potential role of digital game-based learning in nurse education (Submitted).

#### T 1-3: Gamification in teaching.

##### In preparation (title draft):

Foss B, Oftedal BF, Leland A, Stordalen J, Mordt P, Løkken A. Digital Game Based Learning (DGBL): A Good Supplement to Increase Medication Calculation Skills in Nurse Education.

##### Links:

PilleSpillet Regningen: <http://www1.uis.no/Fag/Sykepleie/betatest/web/>

PilleSpillet Håndteringen: <http://www6.uis.no/fag/Sykepleie/betatest/medihand/>

<https://uis.widencollective.com/dam/externalorderpickup/823f321b-88c3-4f6f-bfa1-4d53db86dbfb>

NettOp: <http://www.uis.no/om-uis/organisasjonen/administrasjon/nettop-avdeling-for-utvikling-av-digitale-laeremidler/>

##### Selected partners:

Department of E-learning Development (NettOp, UiS) (Leader Atle Løkken)

University of Nottingham (Professor Heather Wharrad).

SAFER (Leader Elsa Søyland)

Laerdal Medical AS (Michael Sautter)

UiA, Faculty of Health & Sport Sciences (Head of the Department Anne Flåtten Tønsberg & Leader Kari Brodtkorb, Grimstad).

## **WP 2. Teaching and learning in simulated environments.**

### **T 2-1: High- and low-fidelity simulation in health and social worker education practices.**

#### **Links:**

<http://www.laerdal.com/no/News/48479983/Jon-Laerdal-demonstrerer-SimPad>

<http://www.uis.no/nyheter-og-presserom/trener-paa-livredning-med-simpad-article76705-8108.html>

<http://www.aftenbladet.no/nyheter/okonomi/jobb/Styrer-stumme-Karl-i-sengen-pa-UiS-3139057.html#.UX5kL8rds0o>

<http://www.safer.net/>

#### **Selected partners:**

Laerdal Medical, Norway, [Michael.Sautter@laerdal.no](mailto:Michael.Sautter@laerdal.no)

University of Stavanger, Norway, [Venche.Hvidsten@uis.no](mailto:Venche.Hvidsten@uis.no)

University of Stavanger, Post Doctor, [sissel.i.husebo@uis.no](mailto:sissel.i.husebo@uis.no)

Stavanger University Hospital, Professor, [eldar.soreide@sus.no](mailto:eldar.soreide@sus.no)

SAFER, Leader, [Elsa.Soyland@safer.net](mailto:Elsa.Soyland@safer.net)

UiA, Faculty of Health & Sport Sciences (Head of the Department Anne Flåtten Tønsberg & Leader Kari Brodtkorb, Grimstad).

### **T 2-2: Innovation in education in the public sector.**

#### **Links:**

<http://www.uis.no/research-and-phd-studies/research-centres/centre-for-innovation-research/>

<http://www.uin.no/omuin/fakulteter/fsv/senter/Pages/default.aspx>

### **T 2-3: Patient safety.**

#### **Reference:**

Aase, K. (Ed.) (2010). *Pasientsikkerhet - Teori og praksis i helsevesenet*. Universitetsforlaget. ISBN 978-82-15-01369-5.

#### **Selected partners:**

Hillerød Hospital, Denmark (Christian von Plessen)

Haukeland Universitetssykehus (Stig Harthug)

Imperial College, London (Susan Burnett)

Kungliga Tekniska Högskolan, Stockholm (Mirjam Ekstedt, Synnøve Ødegård)

**Link:** [www.seros.uis.no](http://www.seros.uis.no)

### **WP 3. Practical knowledge and formation of education of professions.**

#### **T 3-1: Study foundation semesters.**

**Links:** <http://www.uin.no/studietilbud/finnstudier/Pages/default.aspx>

<http://www.uib.no/filearchive/innstilling-dannelsesutvalget.pdf>

<http://www.uin.no/english/aboutus/faculties/phs/centres/cpk/Pages/default.aspx>

**Reference:** Hagtvet, Bengt og G. Ognjenovic red. (2011) *Dannelse*. Akademika Forlag.

<http://www.akademika.no/dannelse/hagtvet-bernt-redaktoer/ognjenovic-gorana-redaktoer/9788282650274>

#### **T 3-2: Development of models for knowledge-building network and user participation.**

**Links:**

<http://www.uia.no/no/div/sentre/praxis-soer>

[http://www.agderforskning.no/reports/pro\\_09\\_2009\\_kunnskapende\\_netverk\\_kunnett\\_.pdf](http://www.agderforskning.no/reports/pro_09_2009_kunnskapende_netverk_kunnett_.pdf)

<http://a-larm.no/vest-agder>

<http://www.rom-agder.no/>

<http://www.veiledernet.net/index.php?pageID=105&page=%26Aring%3Bbok+2011>

#### **T 3-3: Ethics and practical knowledge.**

**Links:**

<http://www.uis.no/forskning-og-ph-d-studier/vi-forsker-paa/helse-og-velferd/helseetikk/>

[http://www.uia.no/no/portaler/om\\_universitetet/helse-\\_og\\_idrettsvitenskap/forskning/prosjekter](http://www.uia.no/no/portaler/om_universitetet/helse-_og_idrettsvitenskap/forskning/prosjekter)

<http://www.uin.no/omu/fakulteter/phs/senter/spk/Pages/default.aspx>

**References:**

Slettebø, Å. (2013). *Sykepleie og etikk*. Oslo: Gyldendal Akademisk.

Brinchmann, B.S. (2012). *Etikk i sykepleien*. Oslo: Gyldendal Akademisk.

Slettebø, Å. & Nortvedt, P. (red). (2006). *Etikk for helsefagene*. Oslo: Gyldendal Akademisk.

#### **T 3-4: Participation of non-governmental organisations in education.**



**Links:**

[http://www.uis.no/subject/?categoryID=8322&parentcat=8935&code=BSY340\\_1&name=Sykepleie+med+fokus+p%C3%A5+helsefremming+og+brukermedvirkning](http://www.uis.no/subject/?categoryID=8322&parentcat=8935&code=BSY340_1&name=Sykepleie+med+fokus+p%C3%A5+helsefremming+og+brukermedvirkning)

[http://www.uis.no/studietilbud/helse-og-sosialfag/sykepleie/sykepleie/studieplan-og-emner\\_2/](http://www.uis.no/studietilbud/helse-og-sosialfag/sykepleie/sykepleie/studieplan-og-emner_2/)

<http://seros.uis.no/article.php?articleID=60747&categoryID=7028>

**References:**

Storm, M. (2009). Brukermedvirkning i psykisk helsearbeid. Oslo: Gyldendal Akademisk.

Bachke, Carl Christian; Hallandvik, Jan-Erik og Hødnebo, Sigrid Melby Å bli rik på opplevelser ... En evaluering av «Ferie for alle» - et tilbud fra Røde Kors i Aust-Agder; *Skriftserien nr. 135*, Høgskolen i Agder, Kristiansand.

Hallandvik, Jan-Erik; Hødnebo, Sigrid Melbye; Bachke, Carl Christian. Trenger vi en feriepolitikk for utsatt ungdom? Kommunale saksbehandlers håndtering og vurdering av feriestøtte. *Tidsskrift for ungdomsforskning* 2009; Volum 9. (2) s. 45-62, UIA.

Bachke, Carl Christian; Hødnebo, Sigrid Melbye; Hallandvik, Jan Erik. On the road towards a holiday-trip education for children (0 to 18 years). *Pedagogical Technologies in Socialization and Resocialization of Society* 2011; Volum 2. s. 13-31, UIA.

**WP 4. Management, leadership and dissemination of R&D into education.****T 4-2: Leadership.****References:**

Akerjordet K., Lode K. & Severinsson E. (2012) Clinical nurses attitudes towards research, management and organisational resources in a university hospital: part 1. *Journal of Nursing Management* 20, 814-823.

Akerjordet K., Lode K. & Severinsson E. (2012) Clinical nurses' research capacity in a Norwegian university hospital: part 2. *Journal of Nursing Management* 20, 824-832.

## **CV for Gunn Strand Hutchinson, born 17.12.51, professor in Social Work, Nordland University (UIN)**

### **Education:**

- 1974: Examen philosophicum, University of Tromsø.  
1975: One year program in Psychology, University of Trondheim.  
1975-1978: Qualification in professional Social Work, Nordland Regional College.  
1992: Cand. Polit.degree in Health- and Social Policy, University of Bergen

### **Work experience:**

- 1978 - 1983: Social Worker in Social Welfare Office, Berg municipality.  
1983 - 1984: Temporary teacher in Social Work at Nordland Regional College.  
1984 -1986: Research assistant, Nordland Regional College.  
1988 -1991: Project Leader for deinstitutionalisation, Region Team for Mentally Disabled, Nordland County.  
From 1991 and currently: employed at the department of Social Work Studies, Faculty of Social Sciences, UIN.  
From 2013: Professor in Social Work.

### **Academic and administrative positions:**

- 1995-1997: Program Director Social Work program at Bodø University College (BUC).  
1996-2006: Coordinator of cooperation between social workers at California State University, Chico, and UIN involving student and professional development / research.  
1997-2002: Member of Steering Committee on collaboration between Pomor University, Arkhangelsk and UIN, involving student exchange, teaching, professional development and research.  
1996-1997 and 1998-1999: Leader for the academic board, BUC.  
2000: Three months visiting Scholar, University of Melbourne, Australia, School of Social Work.  
2000 - 2002: Head of Sociology and Social Work.  
2004 and currently: Program leader decentralized Social Work education, UIN.  
2005 - 2007 Member of the board, NASSW (Nordic Association of Schools of Social Work).  
2007-2011: Director of NASSW.  
2007 - 2011: Member of the board IASSW (International Association of Schools of Social Work).  
2007-2010: Leader of the institute for Social Work, UIN.

### **Publication list**

#### **Books:**

- Hutchinson, G.S. and Oltedal, S. (1996) *Models of social work. From different roots to the same field of work*. Oslo: Tano Aschehoug. This book has been translated into Danish and Russian.  
Hutchinson, G.S. (1999) *Community Work in Social Work*. Oslo: Universitetsforlaget.  
Hutchinson, G.S. and Oltedal, S. (2003) *Models of Social Work*, 2nd issue Oslo: Universitetsforlaget.  
The book has been translated into Danish and English.  
Hutchinson, G.S. (2007) *Social Work in the community*. Oslo: Gyldendal Academic.  
Hutchinson, G.S. (2009) Social Work, Hutchinson, G.S. (ed.), *The welfare educations in Health and Social Work*. Oslo: Universitetsforlaget.  
Hutchinson, G.S. (2009) The Mandate for Community Work in the Nordic Welfare States, in Hutchinson, G.S. (ed.) *Community work in the Nordic countries*. Oslo: Universitetsforlaget.  
Hutchinson, G. S. (2010) *Community work. Mobilization and participation in Social Work*, 3rd. issue, Oslo: Gyldendal Academic.

#### **Articles in books:**

- Hutchinson, G.S. (1997) Social Work and the prevention of social problems at the municipal level, in Lyngstad, R., Støkken, A. and Lichtwarck, W. (eds.), *The municipality as a welfare provider*, Oslo: Universitetsforlaget.  
Hutchinson, G.S. (2005) Development, tensions and conflicts in social work education and social work, in Oltedal, S. (ed) *Critical Social Work, to analyze in the light of theory and experience*, Oslo: Gyldendal Academic.  
Hutchinson, G.S. (2011) Social Work and Disability: a Human Rights Perspective, in Healy, L. and

Link, R. J. (eds.), in *Handbook on International Social Work. Human Rights, Development, and the Global Profession*, Oxford: Oxford University Press.

Hutchinson, G.S. (2013) Community Work within the Norwegian Welfare State: Barriers and possibilities for work with Particularly vulnerable groups, in Larsen, AK, Sewpaul, V. and Hole, G., *Participation in Community Work*, Oxon: Routledge Books.

#### **Referee rated articles in journals:**

- Hutchinson, G.S. (2002) Domestic violence and the welfare regime in Norway, in an *Australian Feminist Journal*, Issue 12 A special international edition on Violence Against Women.
- Hutchinson, G.S. (2004) Social Work - underrated as a method? In *Nordic Social Work*, No. 3.
- Hutchinson, G.S. and Weeks W. (2004) Living conditions of women who experience violence from their partners: Norway and Australia comparisons, in *Australian Journal of Social Issues*, AJSI, volume 39, number 4.
- Hutchinson, G.S, Sandvin, J., Bruaset U.R., Klette, A., Sommerseth, T. (2012) Prerequisites for developing good relationships with users of the social services, in *Fontene Research*, 2/2012.
- Sandvin, J., Bjørgero, F., Hutchinson, G.S. and Johansen, P. (2011) Public – Private partnership. A critical discussion, in *Comparative Social Work Journal*, Issue 2011/2.
- Hutchinson, G.S., Sandvin, J., Bjørgero, F. and Johansen, P. (2013) Cooperation between public services and activity-based, non-governmental organizations: a resource for social work?, in the *Journal of Youth Research*, 1/2013.

#### **Reports:**

- Hutchinson, G.S. (1984) *About the decentralized structure in the care of people with mental disability*. NDH: Department of Social Work, 1984.
- Hutchinson, G. S. (1985) *Mentally Disabled and municipalities*. NDH: Department of Social Work, Report 1-1985.
- Hutchinson, G. S. (1986) *Out of the large institution*. HSN: Department of Social Work, 1986. Report 3-1986.
- Hutchinson, G. S. (1986) *Into ones own home*. HSN: Department of Social Work, Report 4-1986.
- Hutchinson, G.S. (1999) *Work booklet and video to textbook models of social work*, HBO report 4/1999.
- Hutchinson, G.S. (1999) *Social workers in the municipal social services and informant work*. HBO report 8, 1999.
- Hutchinson, G.S., Lund, L. and Oltedal, S. (2001) Social Work in Norway, in Hutchinson, G.S., Lund, L., Oltedal, S. and Lyngstad, R. (eds.), *Social Work in five countries. Professional, Educational and Social Policy Context for Social Work in Australia, Canada, Norway, Russia and the United States*. HBO report 25/2001.
- Hutchinson, G.S. (2002) The social worker as a player in the local political system, in Thyness, P. (ed.) *Nordic Conference in social work*, HIO report 2002 No. 30.
- Hutchinson, G.S. and Brown, P. (2002) Social work in public agencies: a comparative study between California and Norway, in *Professionalisation of social work: same concepts in different contexts?* Report from the closing Conference of the Pomor Project.
- Lyngstad, R., Hutchinson, G.S., Lund, L. and Oltedal, S. (2004) Single Mothers, Poverty and Social Work. A Case Study from Norway, in Lyngstad, R., Hutchinson, G.S., Lund, L. and Oltedal, S. (eds.) *Single Mothers, Poverty and Social Work. Case Studies from Norway, Australia, Canda, Russia and USA*. HBO report 8/2004.
- Hutchinson, G.S. (ed.) (2004) *Preventive Social Work*, HBO report 23/2004.
- Hutchinson, G.S. and Weeks, W. (2005) Living conditions of Women who experience violence from their partners, Norway and Australia comparisons, in Hutchinson, GS and Oltedal, S. (eds), *Coping with violence against women. Studies from Australia, Canada, Norway, Russia and the United States*. HBO report 7/2005.
- Hutchinson, G.S. (2005) Domestic violence and the welfare regime in Norway. In Hutchinson, G.S. and Oltedal, S. (eds) *Coping with violence against women. Studies from Australia, Canada, Norway, Russia and the United States*. HBO report 7/2005.

**UNIVERSITETSPORTFOLIO****Contact information**

*Full Name* Anna Elisabeth Willumsen  
*Date of Birth* 31<sup>st</sup> January, 1953  
*Present Position* Professor in Social Work, University of Stavanger, Department of Social Studies  
*E-mail* elisabeth.willumsen@uis.no

**Education**

2009 (cont.)	Prof. in social work	University of Stavanger
2006	Dr Public Health	Nordic School of Public Health, Gothenburg
1994	Master in Special education	University of Stavanger
1980	Social Work, bachelor	Trondheim University College

**Employment**

2013 (cont.)	Part time position	Centre of Innovation Research, Univ. Stavanger
2013 (cont.)	Docent Social Work	University of Helsinki
2012 (cont.)	Prof. II Social Work, 20%	Molde University College
2009 (cont.)	Prof. Social Work	University of Stavanger
2008-10	Assistant Professor, 20%	Nord. School Public Health, Gothenburg
2006-09	Associate Professor, Soc Work	University of Stavanger
1995-06	Assistant Professor, soc work	University of Stavanger
1993-95	Assistant Professor	Centre for Behav. Research, Univ.Stav.
1975-93	various employments as social worker, project collaborator related to the drug/abuse area as well as primary and secondary school, mainly working with children and young people at risk and interprofessional collaboration in the child welfare field.	

**Research and Scientific Activities***Areas of research and competence:*

The following areas are central for research and publication: Interprofessional collaboration, Innovation in Public sector, Professional performance, Service User Perspective, Practice Research, Social Work.

*Research Projects:* Received grants for 5 national and international projects

*Committee Work:* UiA, UiS, Univ of Toronto, HiL (PhD doctoral positions and professors in social work

*Review/peer review:*

*Journals:* "Uniped", "Fonteneforskning", "Tidsskrift for Norsk Psykologforening", "Norges Barnevern", "Journal of Interprofessional Care" (Reviewer since 2006), "Child Abuse Review".

*Books:* "Interprofessional Teamwork for Health and Social Care", S. Reeves et al., Wiley-Blackwell.

- "Hvis ungdommen fikk bestemme", Hilde Marie Thrana. Review for Gyldendal Akademisk, 2008.
- "Interprofessional Teamwork", Scott Reeves et al., Blackwell Publishing, 2007.

*Publications*National and international scientific peer reviewed articles

1. Redalen, K., Ellingsen, I. T., Studsrød, I. & Willumsen, E. (2013). «Portvakt eller døråpner. Å rekruttere informanter til barnevernsforskning». *Tidsskriftet Norges Barnevern*, **90**, 1, 18-31.
2. Studsrød, I., Willumsen, E. & Ellingsen, I. T. (2012). «Parents' perceptions of contact with the Norwegian Child Welfare Services. *Child & Family Social work*. doi:10.1111/cfs.12004 (level 2).
3. Willumsen, E. & Alstveit, M. (2012). "Improving Public Health Nursing – An Example of Community Based Research in Norway". *International Practice Development Journal*, 2 (2) [4]. <http://www.fons.org/library/journal.aspx>
4. Willumsen, E., Åhgren, B. & Ødegård, A. (2012). «A conceptual framework for assessing interorganisational integration and interprofessional collaboration". *Journal of Interprofessional Care*, 26 (198-204).
5. Ødegård, A. & Willumsen, E. (2011). "Felles innsats eller solospill. En kvalitativ studie om tjenesteyteres samarbeid omkring barn og unge". *Tidsskriftet Norges Barnevern*, nr.4.

6. Kvarnström, S., Willumsen, E., Andersson-Gäre, B. og Hedberg, B. (2011). "How service users perceive the concept of participation, specifically in interprofessional practice". *British Journal of Social Work*, Advance Access published May 4, 2011, pp. 1-18. (level 2).
7. Willumsen, E. & Studsrød, I. (2010). "Høyere utdanning og praksisnær forskning i profesjonsutdanningene – et eksempel fra sosialt arbeid". *Uniped*, 33, (1):25-36.
8. Willumsen, E. (2008). Interprofessional collaboration – a matter of differentiation and integration? Theoretical reflections based in the context of Norwegian childcare. *Journal Interprofessional Care*, 22/4, (352-363).
9. Willumsen, E. (2006). Interprofessional collaboration in residential childcare. Avhandling i folkehelsevitenskap, Nordiska högskolan för folkhälsovetenskap, Göteborg.
10. Willumsen, E. (2006). Leadership in interprofessional collaboration – The case of child care in Norway. *Journal of Interprofessional Care*, 20, 4, pp. 403-413.
11. Willumsen, E. & Skivenes, M. (2005). Collaboration between service users and professionals: Legitimate decisions in child protection - a Norwegian model. *Child & Family Social Work*, 10, 197-206. Nivå 2
12. Willumsen, E. & Severinsson, E. (2005). Parents' collaboration and participation in a residential child care setting. *International Journal of Child & Family Welfare*, 8, 1, 19-31.
13. Willumsen, E. & Hallberg, L. (2003). "Interprofessional collaboration with young people in residential care: Some professional perspectives". *Journal of Interprofessional Care*, 17, 4, 389-400.
14. Willumsen, E. (1996) "Veiledning i forhold til saksfelt og kontekst". *Spesialpedagogikk* nr. 5.
15. Willumsen, E. (1995). "Veiledning og psykososiale vansker i skolen. Stiller det psykososiale saksfelt spesielle krav til veiledningsmodellenes teorigrunnlag? *Nordisk tidsskrift for spesialpedagogikk*, nr. 1.

Books and chapters, peer reviewed

1. Willumsen, E. (2011). "Sykepleiere og tverrprofesjonelt samarbeid". Kompendium til nettversjon av sykepleie bachelor.
2. Willumsen, E. (redaktør), (2009). "Tverrprofesjonelt samarbeid i praksis og utdanning". Universitetsforlaget.
3. Willumsen, E. (2009). "Tverrprofesjonelt samarbeid i praksis og utdanning i helse- og sosialsektoren". I: *Tverrprofesjonelt samarbeid i praksis og utdanning*. Willumsen, E. (red.), U-forlaget.
4. Willumsen, E. (2009). Tverrprofesjonelt samarbeid og ledelse I: *Tverrprofesjonelt samarbeid i praksis og utdanning*. Willumsen, E. (red.), U-forlaget.
5. Willumsen, E. (2009). Differensiering og integrering – dynamikken i tverrprofesjonelt samarbeid? I: *Tverrprofesjonelt samarbeid i praksis og utdanning*. Willumsen, E. (red.), U-forlaget
6. Willumsen, E. (2006). Sosialt arbeid med barn og familier. Kan folkehelseperspektivet bidra til en tverrfaglig referanseramme? I: *Fasetter av sosialt arbeid*. Omre, Schjelderup, Østerhaug (red.), Tapir akademisk forlag.
7. Willumsen, E. (2006). Interprofesjonell samverkan och brukarmedverkan kring utsatta barn. I: *Samverkan i nordiska välfärdssystem*. Axelsson & Bihari Axelsson (red.), Studentlitteratur, Sverige.
8. Skivenes, M. & Willumsen, E. (2005). User participation and child protection. A structural framework for collaboration in core groups. In: *In the Best Interests of Children and Youth. International perspectives*. Grietens, H., Lahaye, W., Hellinckx, W. & Vandemeulebroecke, L. (Eds.), Belgia.
9. Willumsen, E. (redaktør) (2005). *Brukernes medvirkning. Kvalitet og legitimitet i velferdstjenestene*. Universitetsforlaget.
10. Skivenes, M. og Willumsen, E. (2005). "Brukermedvirkning i barnevernets ansvarsgrupper". I: Willumsen, E. (redaktør) (2005). *Brukernes medvirkning. Kvalitet og legitimitet i velferdstjenestene*. Universitetsforlaget.
11. Willumsen, E. (2005). "Foreldre som brukere og deltakere i tverrfaglig samarbeid med barneverntjenesten". I: Willumsen, E. (redaktør) (2005). *Brukernes medvirkning. Kvalitet og legitimitet i velferdstjenestene*. Universitetsforlaget.
12. Willumsen, E. & Breivik, P. (2003). Welfare Policy and Education Policy: How do these Factors Influence Interprofessional Education? The Norwegian Case. In: *Interprofessional Collaboration: From Policy to Practice in Health and Social Care*. Leathard, A. (Ed.), Brunner-Routledge.
13. Hærem, E. og Willumsen, E. (1997) "Observasjon i tverretatlig barnevernsarbeid" I: Kjellevold, A. m.fl. *Samarbeid for barnets beste*, Ad Notam.
14. Kjellevold, A. og Willumsen, E. (1997) "Informasjonsformidling og samarbeid i barnevernsaker" I: Kjellevold, A. m.fl. *Samarbeid for barnets beste*. Ad Notam.

## CURRICULUM VITAE

**Name** Slettebø, Åshild  
**Address** Tønnevoldsgate 9  
N-4877 Grimstad, Norway  
**E-mail** [ashild.slettebo@uia.no](mailto:ashild.slettebo@uia.no)  
**Phone** 37 23 37 87 (work);  
99 24 33 15 (mobile)

### Present position

Professor in Health Care Science, University of Agder 100 % August 2009 → continued  
Professor II, Oslo and Akershus University College of Applied Sciences 20 %  
August 2009 → October 2014

### Education

Registered Nurse, Telemark Nursing College	June 1982
Master in Nursing Science, University of Oslo	December 1987
Specialization in gerontology, Oslo University College	February 1996
Doctor rerum politicarum (dr.polit. / PhD), University of Oslo	June 2002

### Publications

#### Dissertation

1. Slettebø, Å. (2002). *Strebing mot pasientens beste: En empirisk studie om etisk vanskelige situasjoner i sykepleiepraksis ved tre norske sykehjem*. PhD-thesis. University of Oslo.

#### Publications:

Total 35 scientific reviewed articles, and 22 professional articles in international journals  
9 key-note presentations at national and international conferences  
61 papers on national and international conferences

#### Scientific articles last five years:

2. Slettebø, Å. (2008). Safe but lonely: living in a nursing home. *Vård i Norden* 28 (1): 22-25.
3. Pedersen, R; Nortvedt, P; Nordhaug, M; Slettebø, Å; Grøthe, KH; Kirkevold, M; Brinchmann, BS; Andersen, B (2008). In quest of justice? Clinical prioritisation in healthcare for the aged. *Journal of Medical Ethics*, 34 (4): 230-235.
4. Nortvedt, P; Pedersen, R; Grøthe, KH; Nordhaug, M; Kirkevold, M; Slettebø, Å; Brinchmann, BS; Andersen, B. (2008) Clinical prioritisations of healthcare for the aged – professional roles. *Journal of Medical Ethics*, 34 (May): 332–335.
5. Solum, EM; Slettebø, Å; Hauge, S. (2008). Prevention of unethical actions in nursing homes. *Nursing Ethics*, 15 (4): 536-548
6. Debesay, Jonas; Nåden, Dagfinn; Slettebø, Åshild (2008). "How do we close the hermeneutic circle? A Gadamerian approach to justification in interpretation in qualitative studies" *Nursing Inquiry*, 15 (1): 57-66.
7. Halvorsen, K; Slettebø, Å; Nortvedt, P; Pedersen, R; Kirkevold, M; Nordhaug, M; Brinchmann, BS. (2008) Priority dilemmas in dialysis – The impact of old age. *Journal of Medical Ethics*, 34 (August): 585-589.
8. Slettebø, Å., Bryn, V., Hovdsveen, RK., Vold, KC., Syvertsen, AL. (2009). Tospannmodell i praksisstudier i hjemmesykepleien. *Sykepleien forskning*: 01/09: 44-50.
9. Strand, I., Nåden, D. & Slettebø, Å. (2009). Students learning in a skills laboratory. *Vård i Norden*. 29 (3): 18-22.

10. Slettebø, Å., Caspari, S., Lohne, V., Aasgaard, T., Nåden, D. (2009). Human dignity in the life of persons with head injuries. *Journal of Advanced Nursing*. 65(11), 2426–2433. doi: 10.1111/j.1365-2648.2009.05110.x
11. Lohne, V., Aasgaard, T., Caspari, S., Slettebø, Å., Nåden, D. (2010). ‘The lonely battle for dignity’ – human dignity in the life of persons struggling with multiple sclerosis - an interpretative study. *Nursing Ethics*, 17 (3): 301-311.
12. Råholm, M-B. Larsen, B-H., Löfmark, A. & Slettebø Å. (2010). Nursing education in Denmark, Finland, Norway and Sweden – from Bachelor’s Degree to PhD. *Journal of Advanced Nursing*. 66 (9): 2126–2137.
13. Slettebø, Å., Kirkevold, M., Andersen, B., Pedersen, R., Halvorsen, K., Nordhaug, M. & Nortvedt, P. (2010) Clinical prioritizations and contextual constraints in nursing homes – a qualitative study. *Scandinavian Journal of Caring Sciences*. 24 (3): 533–540. doi: 10.1111/j.1471-6712.2009.00745.x (Publisert online 14. april 2010)
14. Lillekroken, D. & Slettebø, Å. (2010). Smerte hos eldre pasienter med demens – vurdering og tolkning. (Pain in older patients with dementia – assessment and interpretation). *Norsk Tidsskrift for Sykepleieforskning*. 12 (4): 3-14.
15. Krohne, K., Slettebø, Å. & Bergland, A. (2011). Cognitive screening tests as experienced by older hospitalized patients: a qualitative study. *Scandinavian Journal of Caring Sciences* 25 (4): 678-687. doi: 10.1111/j.1471-6712.2011.00878.x
16. Slettebø, Å., Hellem, E., Bruusgaard, K-A., Madsen, V.H., Alve, G. & Langhammer, B. (2011). Between power and powerlessness – discourses in the individual plan processes, a Norwegian dilemma. *Scandinavian Journal of Disability Research*, DOI:10.1080/15017419.2011.574846. (publisert online 16. August 2011).
17. Hovland, G., Slettebø, Å. & Ruland, C. (2011). Medpasienten sin rolle i informasjonsutvekslinga i eit internettbasert diskusjonsforum. *Vård i Norden*. 31 (1): 30-34.
18. Varre, P. , Slettebø, Å. & Ruland, C. (2011). ”Det er mitt liv det gjelder”. Kreftpasienters beskrivelse av mestringsmuligheter, slik det kommer til uttrykk på et internettbasert diskusjonsforum. *Vård i Norden*. 31 (3): 4-8.
19. Slettebø, Å. (2012). En fenomenologisk inngang til profesjonsetikken: Tillit i praksis – forutsetning eller fortjeneste? *Nordisk sygeplejeforskning*, 2 (2): 145-155.
20. Alve, G., Madsen, V.H., Slettebø, Å., Hellem, E., Bruusgaard, K.A. & Langhammer, B. (2012). Individual plan in rehabilitation processes: a tool for flexible collaboration? *Scandinavian Journal of Disability Research*, 27 (Apr): 1-14.
21. Vatnøy, T.K., Fossum, M., Smith, N. & Slettebø, Å. (2013). Triage assessment of registered nurses in the emergency department. *International Emergency Nursing*, 21 (2): 89–96.
22. Heggstad, AKT., Nortvedt, P. & Slettebø, Å. (2012). The importance of moral sensitivity when including persons with dementia in qualitative research. *Nursing Ethics*. 20 (1): 30-40.
23. Krohne, K., Torres, S., Slettebø, Å., & Bergland, A. (2013). Being a Standardized Test Administrator: Health Care Professionals’ Test Practice in an Acute Geriatric Setting. *Quality of Health Research*. (Accepted december 2012)
24. Heggstad, AKT, Nortvedt, P. & Slettebø, Å. (2013). ‘Like a prison without bars’ – dementia and experiences of dignity. *Nursing Ethics* (Accepted january 2013).
25. Nåden, D., Rehnsfeldt, A., Råholm, MB., Lindwall, L., Caspari, S., Aasgaard, T., Slettebø, Å., Sæteren, B., Høy, B., Lillestø, B., Heggstad, AKT. & Lohne, V. (2013). A feeling of being abandoned: Aspects of indignity in nursing home residences as experienced by family caregivers. *Nursing Ethics* (Accepted january 2013).

26. Jonassen, K. & Slettebø, Å. (2013). Hvordan videreutvikler barnesykepleiere praktisk kompetanse i klinisk praksis. *Vård i Norden*, 33 (1): 14-19.
27. Langhammer B, Madsen V, Alve G, Bruusgaard KA, Hellem E, Slettebø Å. (2013). Working with Individual Plans; users' perspectives on the challenges and conflicts of users' needs in health and social services. *Scandinavian Journal of Disability Research* (Accepted March 2013).

### Books

28. Slettebø, Å. (2013). *Sykepleie og etikk*. 6th ed. Oslo: Gyldendal Akademisk. (1st ed 1997)
29. Slettebø, Å. (2004). *Strebing mot pasientens beste: en empirisk studie av etisk vanskelige situasjoner i sykepleiepraksis ved tre norske sykehjem*. Kristiansand: Høyskoleforlaget.
30. Slettebø, Å. (red.) (2005). *Etiske utfordringer og kvalifikasjonskrav i helsetjenesten*. Kristiansand: Høyskoleforlaget.
31. Slettebø, Å. & Nortvedt, P. (red.) (2006). *Etikk for helsefagene*. Oslo: Gyldendal Akademisk.
32. Slettebø, Å. & Nortvedt, P. (red.) (2010). *Etik for sundhedsfagene*. (Til dansk ved Jens Peter Kaj Jensen). Århus: Forlaget Klim.
33. Solvang, PK, & Slettebø, Å. (red.) (2012). *Rehabilitering*. Oslo: Gyldendal Akademisk.

**Chapters in books:** 13 chapters (12 in Norwegian books, 1 international (USA)).

34. Nåden, D. & Slettebø, Å. (2011). Norway (p. 421-427). Delkapittel i: Lange, J.W. et al: International Perspectives on Aging. I: Lange, J.W. (2011). *The Nurse's Role in Promoting Optimal Health of Older Adults: Thriving in the Wisdom Years*. Philadelphia: F.A. Davis Company: p. 396-434.
35. Slettebø, Å. (2013). Samhandling i helsetjenesten – makt og avmakt i møtet med helsevesenet. I: Leer-Salvesen, P. & Mesel, T. (2013). *Makt og avmakt: Etiske perspektiver på psykisk helsearbeid*. Kristiansand: Portal Forlag: s. 142-156.

### Membership scientific organisations

Norsk Selskap for Sykepleieforskning	1990 →
Nordic College of Caring Science (Member of the board, 2006-2009 and Chair 2009-2012)	2006 →
Editor-in-Chief Scandinavian Journal of Caring Sciences	2012-2016
Sigma Theta Thau	2012 →
Member of Regional Committee for Research Ethics	2005-2009
Member of National Committee for Research Ethics in Medicine and Health Care Sciences (NEM)	2010-2013
Member Board for Research Programme on Health and Care Services at The Research Council of Norway	2011-2013

### Membership professional organisations

Norwegian Nursing Association	1979 →
The Norwegian Non-fiction Writers And Translators Association (NFF)	2000 →
Kristent forum for sykepleiere og sykepleierstudenter/ Nurses Christian Fellowship International (NCFI)	2002 →

### Supervision phd candidates

- Jonas Debesay: "Kulturell kompetanse og omsorg". Public defence 14. September 2012.



- Kariann Krohne (August 2008-2013): "Rehabilitering som konflikt; del 1 A fra geriatri"
- Anne Kari Tolo Heggstad (August 2009-2013): "Verdighet i demensomsorgen"
- Daniela Lillekroken (December 2010-2014): "Ivaretagelse av opplevelse av sammenheng (OAS) hos personer med demens vurdert av sykepleiere i demensomsorgen"
- Elisabeth Holen Rabbersvik (November 2011-2014): eHelse – Samhandling uten grenser: Kartlegging av behov for samhandling og deling av informasjon i den kommunale helsetjenesten med spesielt fokus på demensomsorg.
- Gro Frivold (August 2012-2015): Oppfølging av pårørende til akutt og kritisk syke pasienter i intensivavdeling.

### **Reviewer phd theses and commissions**

- Chair of commission and 2. opponent Grethe Eilertsen Dr.polit.theses: "Alt er som før, men ingenting som det var": Gamle kvinners opplevelser av livet etter hjerneslag." 2005.
- Member of commission and 2. opponent for Milka Satinovic. Dr.polit.theses: "Omlegging av livskurs: En grunnleggende prosess i et godt liv med multippel sklerose." 2008.
- Member of commission and 1. opponent for Cand.san. Anne Dreyer, PhD-avhandling: "End-of-life decision making in nursing homes. A qualitative study." 2012.
- Opponent på mittseminar for stipendiat Aud Moen, Mittuniversitetet i Sverige, 2011.
- Opponent for Aud Moen, PhD-theses: «Jeg vil leve til jeg dør»: Livslyst hos hjemmeboende kronisk syke eldste eldre. Mittuniversitetet, Sweden, 2013.
- Member of commission and 1. opponent for Cand Cur Connie Bøttcher Berthelsen PhD avhandling: «Relatives in older patients' fast-track treatment programmes during total hip or knee replacement: A grounded theory study.» Aarhus University, 2013.

Member in 13 (and leader of 7 of these) commissions for assessment of positions as Professors (6) or Associate professors (7) at different Universities (UiO, UiA and Aarhus) and University Colleges (Telemark, Østfold, Vestfold, Narvik, Sogn og Fjordane, Stord/Haugesund) in Norway and Denmark. Member in 2 commissions for NOKUT – the Norwegian Agency for Quality Assurance in Education on accreditation for nursing programs at masters level. Member in 4 commissions for assessment of positions as phd-candidates (3) and assistant professor (1).

### **Conference Organizations**

President of the conference 14. -16. mars 2012. Verdighet i helsevitenskapene / Værdighet i vârdvetenskapen / Dignity i caring science. NCCS conference in Oslo, Norway.

President of the conference 25 - 27 mars 2009. Eldre, omsorg (vârdande) og verdighet - mangfold og funksjon. Older people, caring and dignity – diversity and function. NCCS conference in Oslo, Norway.

Member of the scientific planning group Nordic Conference in Ethics in Health Services, University of Oslo, March 7<sup>th</sup> & 8<sup>th</sup>, 2013.

Member of the scientific planning group: November 2010: Mellom livsverden og funksjon: Skandinavisk konferanse om rehabilitering. Between life world and function: Scandinavian conference on rehabilitation. Oslo University College.

Member of the planning group 25. - 27. mars 2004. Verdighet, sårbarhet og krenkelse. Dignity, vulnerability and dehumanization. NCCS conference in Oslo, Norway.

## Teaching

**Postgraduate level:** Course development, course leader at PhD in Health Care Science at University of Agder since 2012: "Health science I" and shared course leadership "Philosophy of Science".

**Advanced level:** Course development, course leader at masters level at Oslo University College since 2006: "Clinical ethics" and "Philosophy of science and ethics".  
Course leader at masters level at University of Agder 2009-2011: "Older people in society" in addition to teaching in different courses.

**Undergraduate level:** Since 1988-2012: Course development and teaching nursing theory and clinical supervision in the Nursing Programme at Telemark Nursing College, Oslo University College and University of Agder.

## Research Areas

**Theme: Rehabilitation.** From The Norwegian Research Council 6.000.000 NOK 2006-2010: "Rehabilitation as conflict". Project leader: Professor Per Koren Solvang. Professor Åshild Slettebø was member of the leader team and co-author of the research application. Project leader for subproject Individual Plan. Method: Case studies and discourse analysis.

**Theme: Ethics.** Dissertation was on ethics in nursing homes. Method: Grounded Theory. From The Norwegian Research Council 5.910.000 NOK 2009-2013 "A life in dignity: A clinical study of people in nursing homes". Project leader: Professor Dagfinn Nåden. Professor Åshild Slettebø was co-author of the research application. Method: Clinical application and hermeneutic analysis.

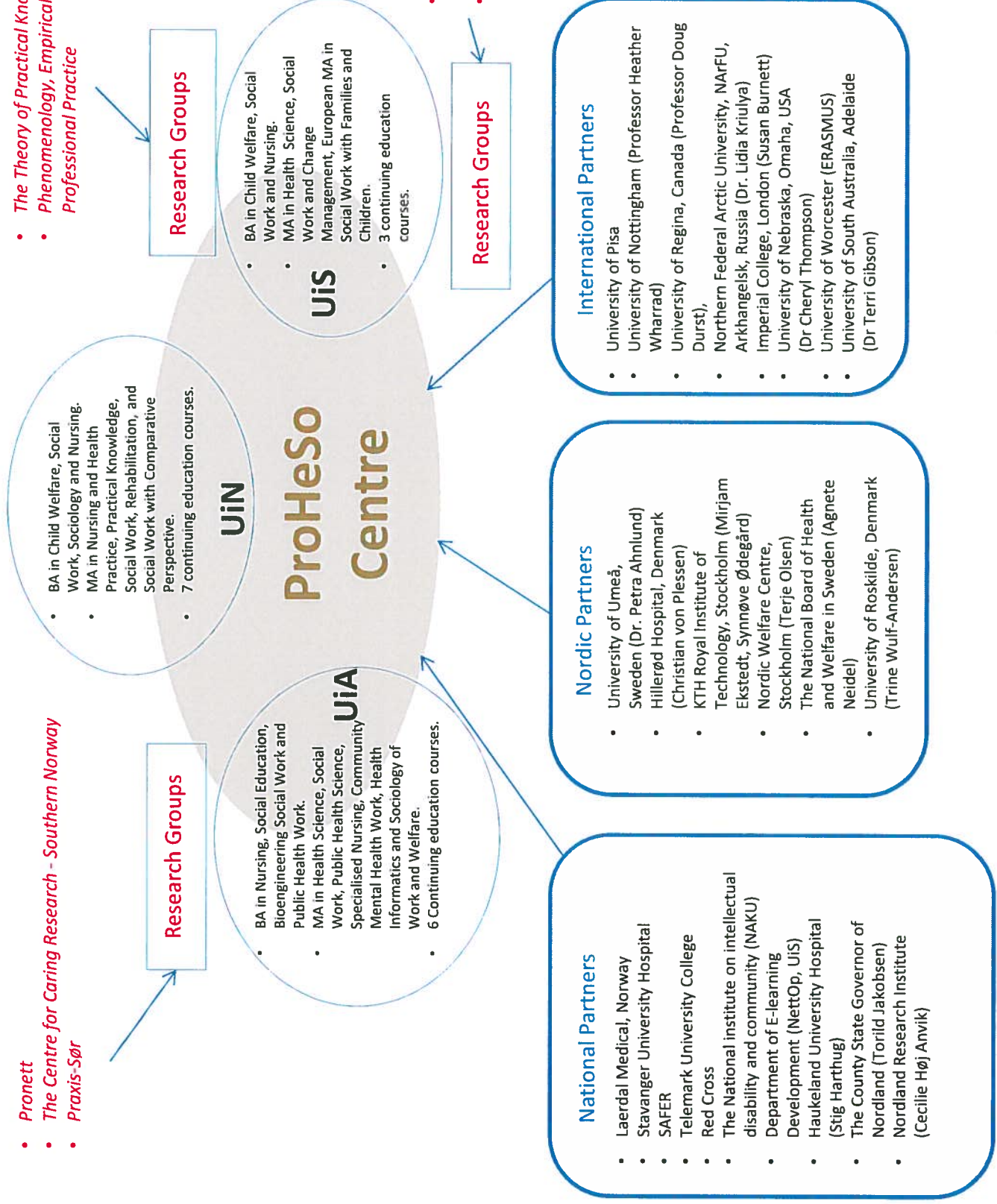
Project leader ongoing projects: professor Åshild Slettebø for the SEEK-project and the EEKAVA-project, UiA. Both projects are regarding ethics in nursing practice in cooperation with municipalities at Agder.

**Theme: Caring of older people.** From The Norwegian Research Council 4.500.000 NOK 2009-2013 «Homeliving older people and older people in institutions: Ethics and life of quality". Project leader: Professor Astrid Bergland. Professor Åshild Slettebø is member of the leader team and co-author of the research application. Method: Qualitative interviews and qualitative content analysis.



- **Pronett**
- **The Centre for Caring Research - Southern Norway**
- **Praxis-Sør**

- **The Theory of Practical Knowledge**
- **Phenomenology, Empirical Studies and Professional Practice**



Centre for Professional Studies in Health and Social Work Education (ProHSo)  
 Consortium: The University of Agder, University of Nordland and University of Stavanger

Timeline 2014-2018

	2014				2015				2016				2017				2018			
	1	2	3	4	1	2	3	4	1	2	3	4	1	2	3	4	1	2	3	4
Midway evaluation																				
Evaluation																				
Web-site																				
CONFERENCES																				
Steering committee (SC)																				
International Advisory Board (IAB)																				
The General Assembly (GA)																				
Applications for ext. fund.																				
WP 1. Developing e-learning resources.																				
Newsletter																				
Journal papers																				
Conference papers																				
WP 2. Teaching and learning in simulated environments.																				
Newsletter																				
Journal papers																				
Conference papers																				
WP 3. Practical knowledge and formation of education of professions.																				
Newsletter																				
Journal papers																				
Conference papers																				
WP 4. Management, leadership and dissemination of R&D into education.																				
Newsletter																				
Journal papers																				
Conference papers																				

AC= Annual conference  
 WS= Workshop