



# School partnerships

- Towards a collaborative partnership structure

# Partnership models

- **Duplication-model:** Overlapping roles and responsibilities between HE tutors and teachers at schools – bestiller tjenester fra praksisfeltet (Cameron-Jones & O'Hara, 1993)
- **Complementary model (separatist):** Clear separation between responsibilities of HEI and schools to provide appropriate support for students (Furlong et al, 2000)
- **HEI-led model:** The HEI provides overall leadership for both the HEI-delivered and school-delivered elements of courses (Smith et al, 2006)
- **Collaborative model:** Professional knowledge contributed by staff in HE and staff in schools is seen as equally legitimate and necessary to develop comprehensive teacher education (Furlong et al, 2000)

# Primary and lower secondary TE

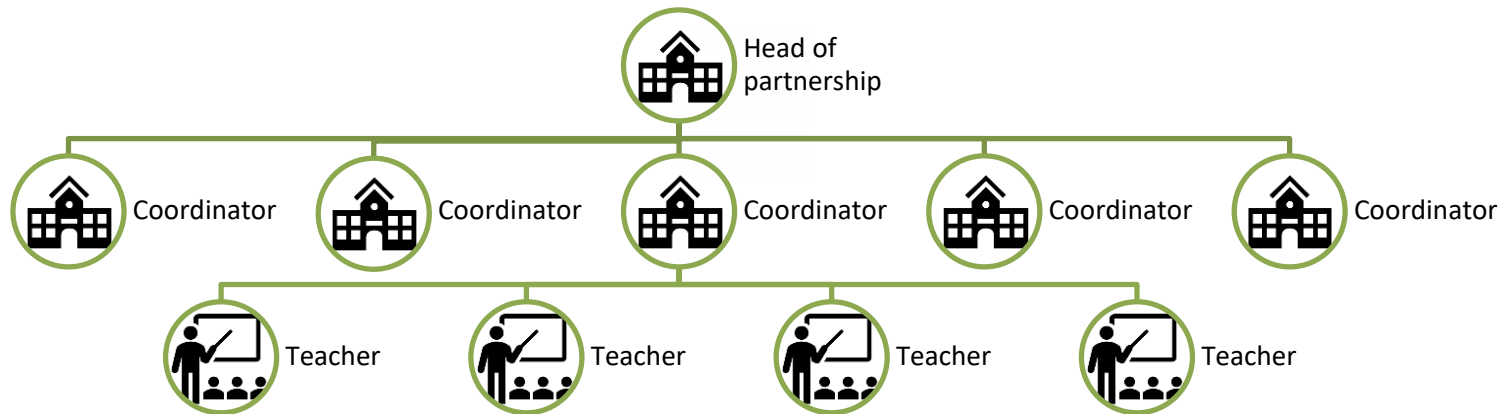


Head of  
practice studies



100 partner schools

# The initial structure of partnerships



# NEW MODEL – PRIMARY AND LOWER SECONDARY TEACHER EDUCATION

